



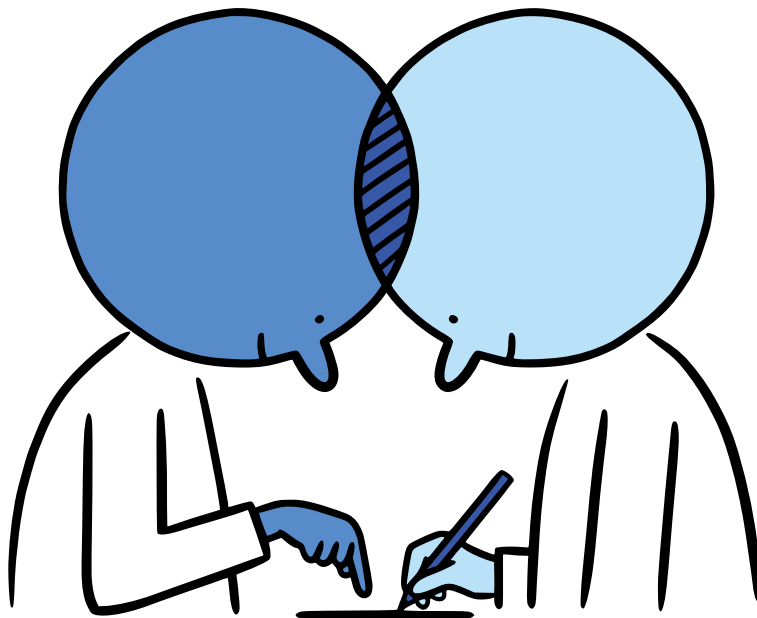
Citrix Long Term Service Release Upgrade Checklist

If you're planning on upgrading to the newest Citrix Long Term Service Release (LTSR), you have quite a few things to plan and consider before you're ready to upgrade. This checklist is meant to help you develop a plan to successfully upgrade your environment by ensuring compatibility with software and operating systems, testing new features, and choosing an upgrade path that best suits your needs.

- Compatibility
- Testing
- Migration path

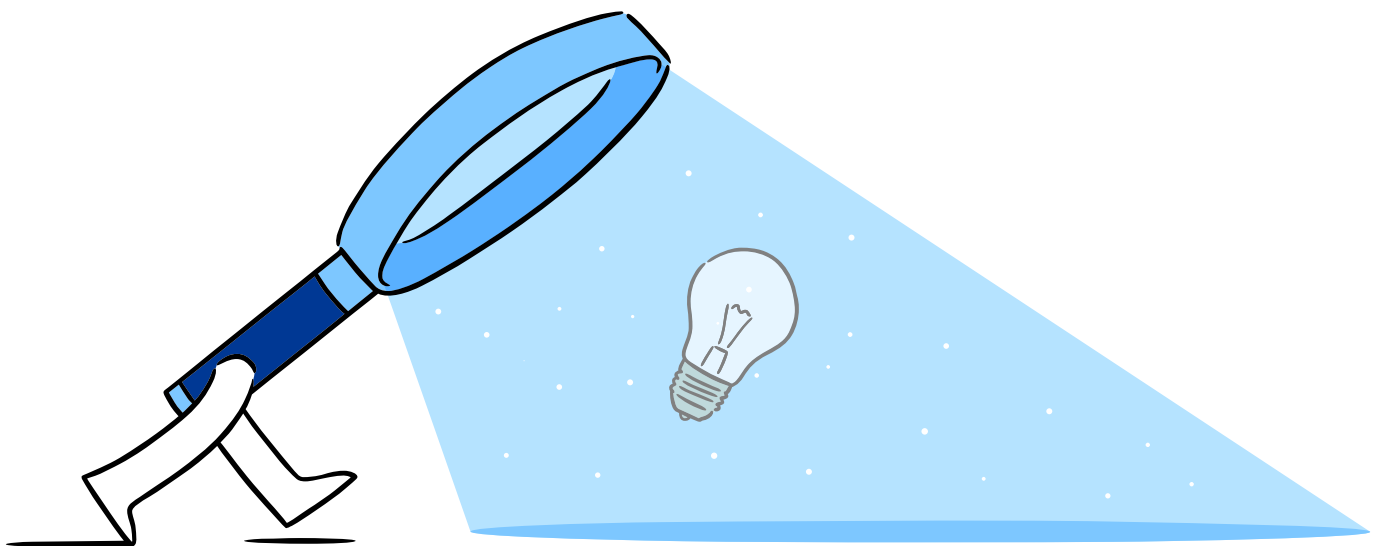
Compatibility

- Check end of life dates for non-Citrix technologies like infrastructure operating systems, VDA operating systems, SQL versions, and hypervisor versions
- Check if you are using any end of life Citrix versions like XenApp 6.5, XenApp Services (also known as PNAgent), Citrix Receiver, or outdated Citrix Workspace app versions
- Make a plan to upgrade your solution to a version supported by the new LTSR if any are out of date



Testing

- Compare features that have come out since your last LTSR upgrade
- Test the new features you wish to adopt in your test environment with the **LTSR Early Access Release**
- Practice upgrading your infrastructure with your chosen upgrade path in your test environment
- Check for quirks or interactions with software or customizations during test upgrades



Migration path

Decide on a migration path,
either in place or parallel

In place

- Perform backups before starting an in-place migration
- Follow Citrix product documentation on the supported in-place upgrade path

Parallel

- Ensure you have enough hardware to support duplicating your site
- Consider your access tier migration strategy, to ensure users are seamlessly migrated to the new site

More resources on preparing for the latest Citrix LTSR

- [Citrix LTSR upgrade blog 1](#)
- [Citrix LTSR upgrade blog 2](#)
- [Tech Paper: Citrix Virtual Apps and Desktops LTSR Parallel Migration](#)
- [New Citrix Virtual Apps and Desktops LTSR Master Class](#)

